



Welcome
to
VennOase

Welcome

Dear guests,

How nice that you are here. We want your stay to be as pleasant as possible and that's why we have created this brochure for you.

It provides all the information about the holiday apartment, where to find things, excursion destinations, restaurant tips and much more.

We wish you an unforgettable stay!

Your hosts

Sabine & Dirk





TABLE OF CONTENTS

ABOUT THE HOSTS	4
HOUSE RULES	5
THE HISTORY OF THE HOUSE	6
WIFI & ELECTRICS	7
THE ROOMS	8
THE KITCHEN	9
THE TERRACE	10
MEANS OF TRANSPORT	11
IN THE NEIGHBORHOOD	12
THINGS TO DO	15
SPORTS OPPORTUNITIES	17
HIKING AND CYCLING TRAILS	19
THE BEST BARS	21
RESTAURANTS	22
IMPORTANT PHONE NUMBER	23
CHECK IN & CHECK OUT	24
THE LOCATION	25
GETTING THERE	26
BEFORE ARRIVAL	27
BEFORE DEPARTURE	28
EVALUATION	29
FOLLOWERS SOCIAL MEDIA	30
BAGGAGE	31
THANKS	32

THE HOSTS



Enjoy yours
stay

It all started 2 years ago...

After Dirk's recording studio in the basement of our house could no longer be operated economically due to the corona measures, we decided to do a complete renovation.

The lower floor was completely gutted and converted into a modern holiday apartment. Every room is furnished with as much attention to detail as possible in order to offer you, dear guests, the best possible stay.

A good end for a lovely place...

Sabine & Dirk



02472 4747



Branderweg 7
52156 Monschau



info@vennoase.de

www.vennoase.de

House rules



1

Our holiday apartment is one Non-smoking apartment, that's why we only ask you on the Terrace or in front of the house to smoke.

2

So that we don't disturb any neighbors,
We ask you not to have parties celebrate. Social evenings with quieter music is natural allowed.

3

If something breaks, please let us know. This happens and we will replace it as soon as possible.

4

Please do not take any items from the apartment or the terrace.

Thanks for complying

THE HISTORY OF THE HOUSE



Our house was built in 2004. From the beginning we planned to use the basement area separately, with its own entrance and terrace. There is also no access inside the house.

In 2005, Dirk's recording studio "OnLine Studios" was extensively installed and used professionally until 2022. Unfortunately, the Corona measures have made continued operations uneconomical.

So we started the complete renovation of the floor for a modern holiday apartment in 2023 and completed it at Easter 2024:
our **VennOase**.



WIFI & ELEKTRICS



WLAN Name:
VennOase_5G / VennOase_2G

WLAN Passwort:
97978114



If it gets really hot in summer,
we offer mobile air
conditioning. For cooler days
there is a heater in every room.



Electricity connections are
available everywhere. Often
also with a charging adapter
for smartphones.
Depending on your home
country, we recommend that
you bring an adapter for any
electrical devices you may
have. However, some adapters
are available.

THE ROOMS

Living room



Our light-flooded living room is equipped with a flat screen and soundbar. The comfortable couch also functions as a sofa bed.

Bathroom



Towels are available in the bathroom, as well as toilet paper and a few toiletries and a hairdryer. The heater has a timer control for preheating.

Bedroom



The bedroom has a blackout blind and heating. Bed linen is provided and does not need to be brought separately. In addition to the closet, there are large storage compartments under the bed, which also contain the bed linen for the sofa bed.

Toilet



The separate toilet has a small hand basin with shelves for sanitary items and towels.



KITCHEN



The heart of our apartment invites you to cooking and eating together.
The kitchen is equipped with everything you need on vacation.

You can find the complete inventory list along with the operating instructions for the electrical devices in the bottom drawer of the display case.

Furnishing

- hob
- oven
- refrigerator
- freezer
- tans
- pots
- cutlery
- toaster
- kettle
- coffee machine
- etc.



THE TERRACE

Usage



Relax on our large terrace facing the garden.

The sun rises right in the direction of the front door, ideal for cozy, sunny breakfasts.
Then she wanders along the terrace until the afternoon.

Terrace

Enjoy your vacation on our cozy terrace. Garden chairs and a table for 4 people are available.
There are also relaxing loungers and a parasol.

Barbecue

Of course, we also have a barbecue facility available for you on warm summer evenings.



MEANS OF TRANSPORT

Further information and contacts for all offers can be found on our homepage

Taxi

There are several taxi companies in Mützenich and the surrounding area that offer transfers. Also to the surrounding airports and train stations.

www.taxi-steffens.de
www.vr-venntouristik.de
www.fahrdienst-bastidamonschau.branchenheld.de

Bus

There are several bus lines, including those from Belgium, that stop in Mützenich. The central bus station in Imgenbroich is about 4km away.

www.avv.de
www.vrr.de

Netliner

A special solution here in the Eifel. The Netliner can be called up individually like a taxi, but doesn't cost more than the bus. The next Netliner stop is right in the neighborhood

www.mova.aseag.de

Train

There are no train connections in the Northern Eifel. The nearest train stations are Aachen and Düren, which can be reached via bus connections. This also applies to the train stations in Belgium.

www.reiseauskunft.bahn.de

In the neighborhood

Konsum am Eifelsteig

The small supermarket in Mützenich is within walking distance and has a wide range of products for quick shopping.

Opening times are:

Monday-Friday: 7:30 a.m. - 5:30 p.m.

Saturdays: 7:00 a.m. - 1:00 p.m.



Shopping mall Imgenbroich

In the neighboring town of Imgenbroich (4km away) there are numerous shops with a wide selection.

Clothing, food, drugstore, etc.

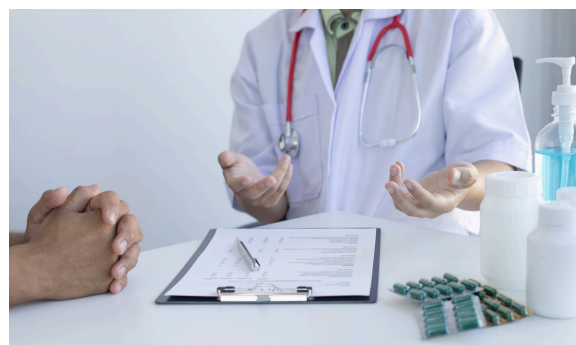


Doctors

There are general practitioners and specialists in the surrounding towns, the North Eifel emergency practice is in the Kammerbruchstr. 8 in Simmerath occupied as follows:
Mon, Tue, Thu: 7:00 p.m. - 9:00 p.m. / Wed and Fri: 4:00 p.m. - 9:00 p.m.

Sat, Sun, public holidays: 9 a.m. - 1 p.m. + 4 p.m. - 9 p.m.
During these times and at night from 9 p.m. to 8 a.m., the doctor on duty can be reached at tel.

02473/89-44 44



Pharmacy

The nearest pharmacies can be found in the neighboring town of Imgenbroich, but also in the surrounding area in Roetgen and Simmerath. You can reach the emergency

medical service in Monschau at number **116117**. Here you can find out the location of the nearest on-call practice.



Every day is an

Adventure.

Experience so much
as possible
and your life
will be unforgettable.

THINGS TO DO

Our beautiful Northern Eifel has so much to offer. Whether it's a hike to Steling or across the footbridges in the Brackvenn, a visit to the old town of Monschau or a boat trip on the Rursee. Everyone gets their money's worth here. We offer numerous options on our homepage www.vennoase.de. Have fun exploring!

STELING

At 658.3 m above sea level, the Steling is the highest elevation in the Aachen city region. The German-Belgian border runs over the mountaintop. The Steling is located on the western edge of the Hohes Venn-Eifel Nature Park. At its southern foot lies Mützenich, a district of Monschau. On the northern slope is the headwaters of the Weser, which flows through the Weser dam near Eupen to Liège into the Ourthe

BRACKVENN

The Brackvenn nature reserve comprises two areas near Mützenich on the Belgian border, which are separated by the L 214. The spruce trees have now been removed over a large area and there is clearly noticeable re-wetting with the associated plants. In one part there is still a large pingo with an open water area.

MONSCHAU

Monschau is only 4km away, close to the Belgian border. It is known for its medieval center with half-timbered houses and narrow cobbled streets. Monschau castle towers over the city with its towers.

RURSEE

In the middle of the Eifel National Park, in a unique scenic setting and surrounded by pristine nature: the conditions for a perfect leisure experience can hardly be better than at Rursee.



Believe in
yourself.
If you want
to achieve your
Goal
you will achieve it.



SPORTS FACILITIES

Pool

The Vennbad, a family-friendly sports pool that has a lot to offer. You will always find lots of toys at the paddling and teaching pool. Swimmers get their money's worth in the sports pool. Have we piqued your interest?



Wilhelm-Jansen-Straße 1 - 52156 Monschau

Phone: 02472 / 80 24 930

Email: vennbad@stadt.monschau.de

Mountainbiking

At MTB-Guide-Eifel you can book rental mountain bikes and guided mountain bike tours in the Hohes Venn-Eifel Nature Park and around the Eifel National Park.



Am Kirchrott 8 - 52156 Monschau-Rohren

Phone: 02472-5755

Email: mail@mtb-guide-eifel.de

www.mtb-guide-eifel.de

Segway-Tours

You glide on the Segway through the unique landscape of the Eifel past the sights of Monschau, the surrounding towns, Schleiden, Gemünd, Simmerath, nearby Belgium, the Rursee and not forgetting the Ravel track.



In der Weide 37 - 52156 Monschau

Phone: 0171 4182458

Email: ravelways@t-online.de

www.ravelways.de

Mini-Golf

In the garden of the Vakantiehôtel "De Lange Man" there is a beautiful, new, classic 18-hole mini-golf course. It is part of the hotel, but anyone who would like to play is welcome. A boules court (or boccia etc.) was also newly created.



Dröft 3 - 52156 Monschau-Rohren

Phone: 02472-912610

Email: info@langeman.de

www.langemann.de



Relax & recharge
new strength.

Our beautiful
Nature

HIKING AND BIKE PATHS



Eifelsteig

The hike on the Eifelsteig leads under the motto "Where rock and water accompany you" into the largest intact raised moor in Europe - the High Fens, through the only national park in North Rhine-Westphalia, past the witnesses to the volcanic past of the Eifel in the Volcanic Eifel to the striking red sandstone cliffs above Trier.

The Eifelsteig passes almost directly past our front door.

www.eifelsteig.de



RAVeL Route

The 1,300 km long RAVeL cycle and hiking trail network currently runs on five RAVeL routes along former railway lines and towpaths across Wallonia. It is reserved for non-motorized users, i.e. H. Cyclists, pedestrians, riders or inline skaters.

Only 2km from our apartment

www.vennbahn.eu



Star routes

Sustainable route hiking in the Eifel. If you are looking for routes for relaxed excursions, then you have come to the right place.

You choose a star location. From this location you take the public transport bus to the starting point of your hike and hike back relaxed.

In various places around our apartment

www.sternrouten.de





It's
wine
o'clock.

The best bars

End the evening comfortably in one of the beautiful bars in the area. There is something for every taste, whether cozy and typical of the country, modern & minimalist or totally stylish & hip. A complete list can be found on our homepage www.vennoase.de



Weisses Pferdchen

In Mützenich, opening hours:

Fri. & Sat. 6 p.m. – 11 p.m. – Sun. 3 p.m. – 10 p.m

There is freshly tapped beer, various wines, non-alcoholic drinks, coffee and cake specialties, tea and small snacks.

Braukeller Monschau

In Monschau's "Braukeller" enjoy one of our over 15 different types of beer (mainly Belgian specialty beers, from Duvel to Chimay to Kwak in a special glass in a wooden frame! Or treat yourself to one of our more than 10 different types of gin from our special "gin menu".



Bodega Imgenbroich

Tapas paired with delicious cocktails in a cozy atmosphere for all ages.

Live bands and various events make the bodega an attractive meeting place in Imgenbroich.



Nothing brings
people more
together
than food.

Restaurants

Here is a small selection of restaurants, there is an extensive list on our homepage. Due to our direct proximity to Belgium, you can rely on a really large selection.



Zur Buche

The cozy dining restaurant in Mützenich offers you home-style/Mediterranean cuisine and a large selection of drinks.



02472 1497



Nelson

Small but fine family restaurant with purely Portuguese cuisine in Imgenbroich.



02472 6084914



Living in Roetgen

There is a menu with varying dishes. There are always new lunch options during the week.



02471 9214542

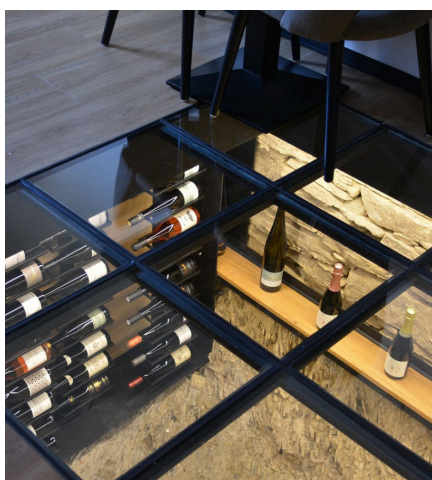


Cafe Bistro Grünental

An important part of the philosophy is our own herb garden, from which fresh ingredients are harvested every day.



02472 8025 106



Gaststätte Dederichs

A seasonal cuisine with a regularly changing menu. There are experimental and modern as well as traditional dishes.



02472 3329



Ratskeller

A popular restaurant in the middle of Eupen / Belgium with home-style cuisine with a regional twist.



0032 87 30 16 01

www.vennoase.de

IMPORTANT TELEPHONE NUMBERS

Hosts	02472 / 4747
Cleaning & Service	02472 / 4747
City hall Monschau	02472 / 81-0
Fire Brigade	112
Police	110
Pharmacy	116 117
Emergency doctors	02473 / 894444
Taxi	02472 / 9709696



For your
safety



CHECK IN CHECK OUT

Check-In from 4 p.m

You can move into the holiday apartment from 4 p.m. Since our cleaner is still completely cleaning the apartment and preparing it for you, it is unfortunately not possible to move into it earlier. However, you can already leave your luggage; you can find more information about this on the baggage information page. You will receive the key as described in the booking confirmation.

Check-Out until 11 a.m

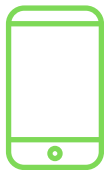
We ask you to leave by 11 a.m. at the latest, as our cleaning staff will then prepare the apartment for the next guests. We ask you to take all items, food and other utensils you brought with you. You can also leave your luggage on your return journey if necessary, please let us know.

YOU CAN FIND US HERE

Ferienwohnung VennOase
Branderweg 7
52156 Monschau-Mützenich



info@vennoase.de



+49 173 271 5758 (Dirk) or
+49 173 273 0302 (Sabine)

If you have difficulties getting there or need help,
don't hesitate to call us.



By car

To get to Monschau by car, first navigate towards Aachen, then follow the federal road B258. The route is well signposted. At the entrance to Konzen, another sign shows the way to Mützenich (Hatzevenn). Turn there.

By train

Unfortunately you can't get to Monschau directly by train, so start your journey with a train to Aachen Hbf. After your arrival in Aachen, use the ASEAG bus line 66 to get directly to Monschau. The bus ride takes about an hour and offers you beautiful landscape views along the way. Plan your trip in advance by consulting the Deutsche Bahn website or app for train connections and the ASEAG website for bus schedules. Buy your bus ticket directly from the bus driver as soon as you are in Aachen.

By bus

To get to Monschau by bus, first travel to Aachen, as there are bus connections directly from there. Use the ASEAG bus line 66, which takes you directly to Monschau. The journey takes about an hour and offers a scenic route through the Eifel. Check the current timetable on the ASEAG website to plan your trip and buy your ticket from the bus driver.

By plane

If you want to use the plane, you should fly to Cologne/Bonn or Düsseldorf airport, as these are the nearest larger international airports. From there you can take a rental car or use public transport to get to Aachen. When you arrive in Aachen, change to the ASEAG bus line 66, which takes you directly to Monschau.

BEFORE ARRIVAL

1

Code for key box

You will receive the code for the key safe by email or via Whatsapp 1 week before arrival. Please make sure that the email does not end up in the spam folder. If you have not received an email at least three days before arrival, please contact us by phone.

2

Food and drinks

Your booking only includes overnight accommodation. For food and drinks each guest is responsible for themselves. You can either cook yourself or go out to eat. Identify foods where you are unsure. If these are available here, you are welcome to bring them with you.

3

Entry

Please contact the Foreign Office for information about the current ones entry requirements are.

4

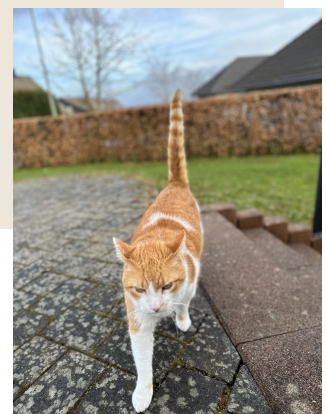
Medication

If you need special medication, please bring it with you. Of course we have pharmacies and doctors on site, but we could it could be other manufacturers. So please be on the safe side.

5

Pets

We cannot allow pets at this time. Among other things, Paul, the tomcat, lives with us. Curious and sociable. It could be that he meows "Hello" to you...



BEFORE DEPARTURE

Checklist

Please collect garbage separately

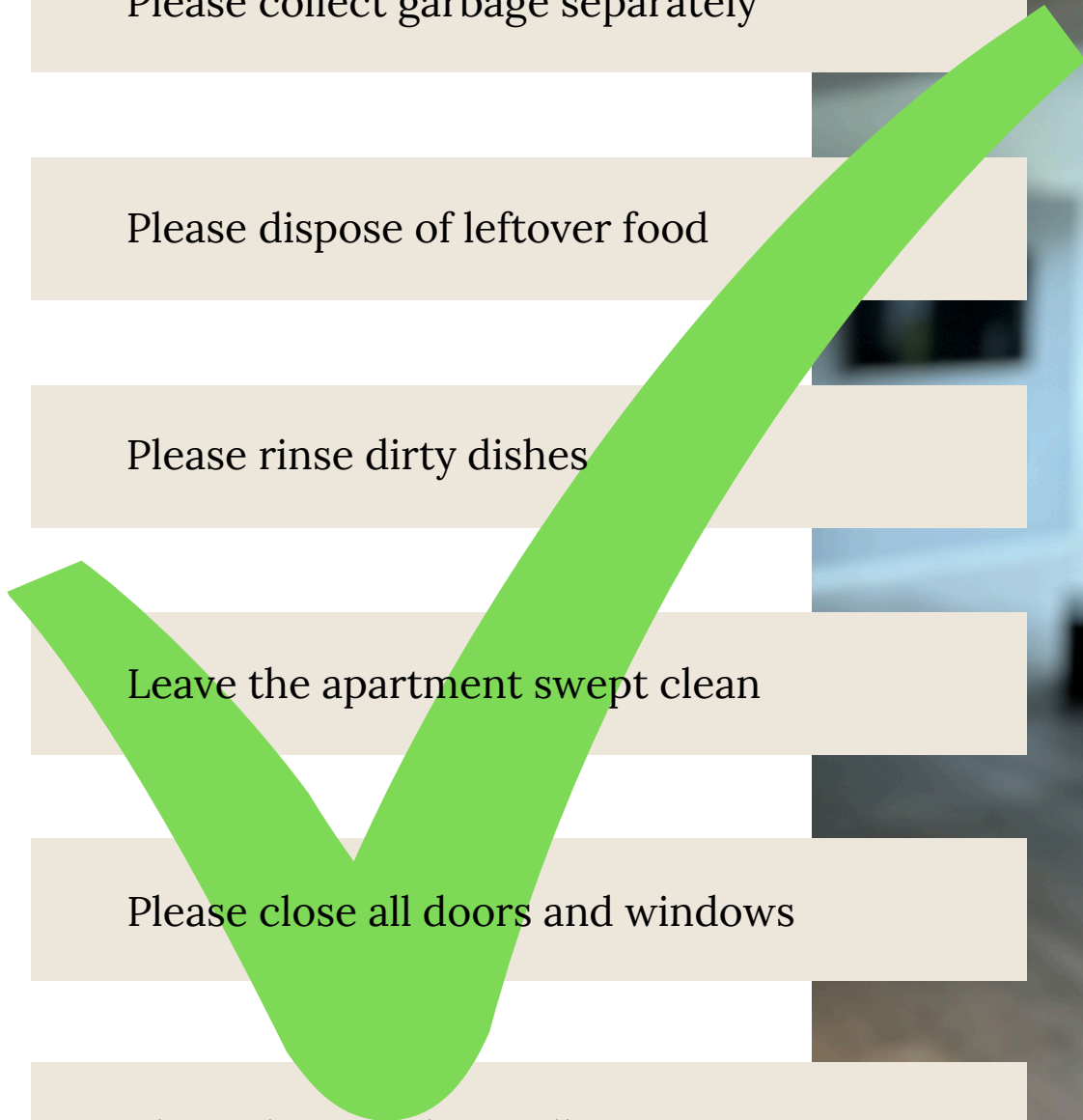
Please dispose of leftover food

Please rinse dirty dishes

Leave the apartment swept clean

Please close all doors and windows

Throw keys in the mailbox

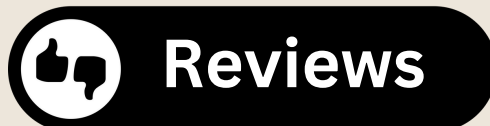


We look forward to a review

REVIEWS

Did you have a lovely stay and enjoyed your time to the fullest?

We would be very happy if you left us a positive review. Simply use the QR code!



Thanks!

Feel free to follow us

Instagram



@vennoase_fewo

Facebook



www.facebook.com/profile.php?id=61557763234887

airbnb



www.airbnb.de/h/vennoase

Booking



www.booking.com/Share-rJfz0U

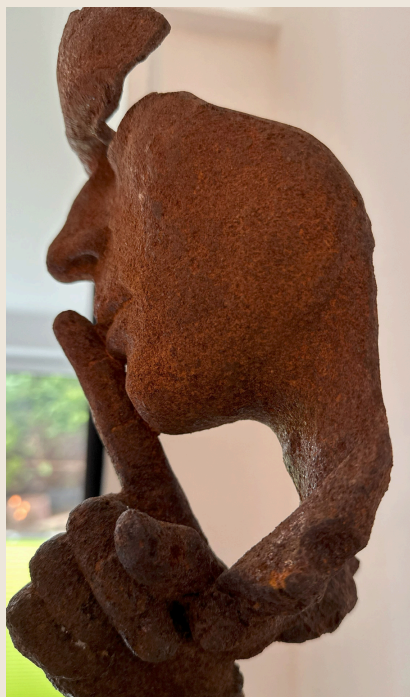
Homepage



www.vennoase.de

Of course, we also regularly publish posts, pictures and clips on social networks. So don't miss any more news and follow us on Instagram, Facebook and get even more information on our homepage www.vennoase.de.

All links are also available via the QRCode to our app.



www.vennoase.de

BAGGAGE

If you are there before 4 p.m., there is
there is the possibility to leave your luggage.

If you leave your luggage on the day of departure
for the return journey or the return flight
If you would like to submit, please give it to us in good time
notice. You can also leave your luggage here
keep safe.

So that your suitcases don't get in your way,
you can leave them in the technical room.
There is enough in the cupboards in the rooms
Space for your clothes.





Thank
you

Dear guests,

We hope you had an unforgettable holiday with many relaxing moments and that you felt completely comfortable in our holiday apartment.

We would be happy to welcome you back soon and wish you a safe journey back.

Your hosts

Sabine & Dirk